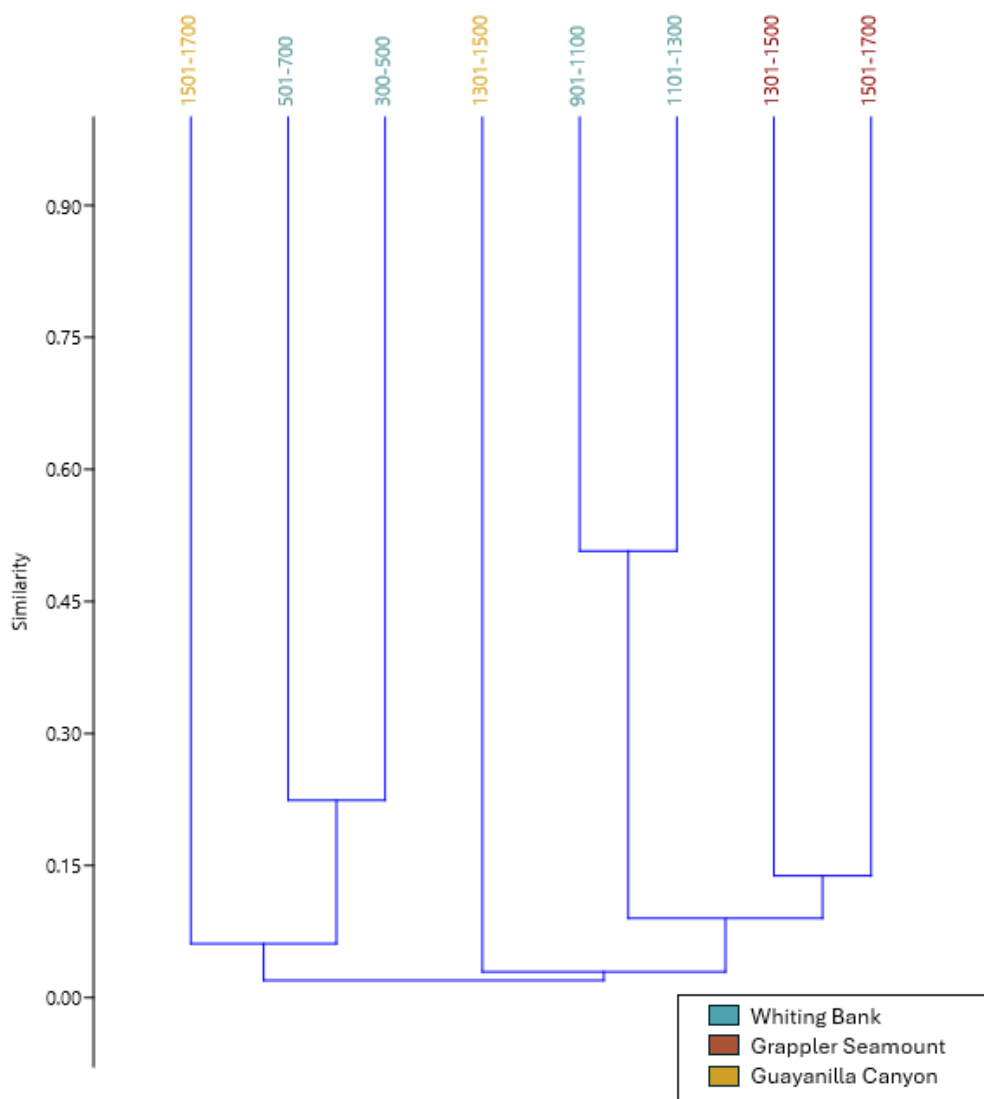


**nMDS Plot Showing Community Structure by Depth and Site Location.** Different shapes represent the sampling sites and colors represent the depth range in each site. The Whiting Bank site depth range was from 300m to 1300m, Guayanilla Bank and Grappler Seamount from 1301m to 1700 m.



**Cluster Dendrogram Across Sites and Depths.** Similarity was calculated using the Bray-Curtis method.